



Frontier Advanced Technology Ltd.

創機科技有限公司

Ultimate shoe last scanning in just 4 minutes!

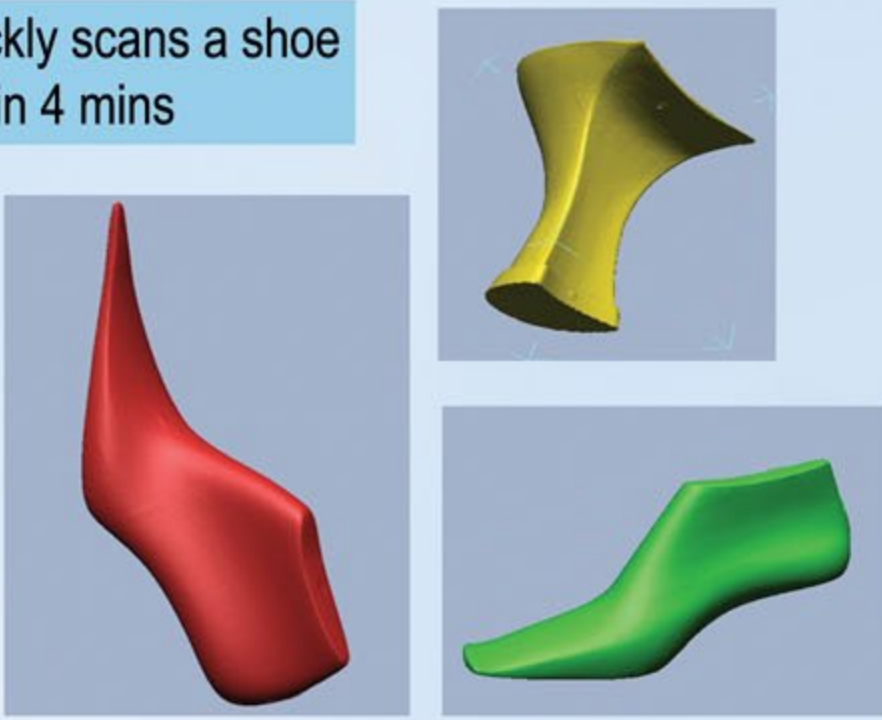
Advantages

- 4 mins high speed laser scanning
- 5-8 times faster than conventional scanning
- Touchless scanning prevents shoe last deformation
- Supports Easylast size scaling and redesigning
- Can incorporate with NewLast and mainland shoe last production
- Highly efficient and economically sound



Scan 3D II - Rotary

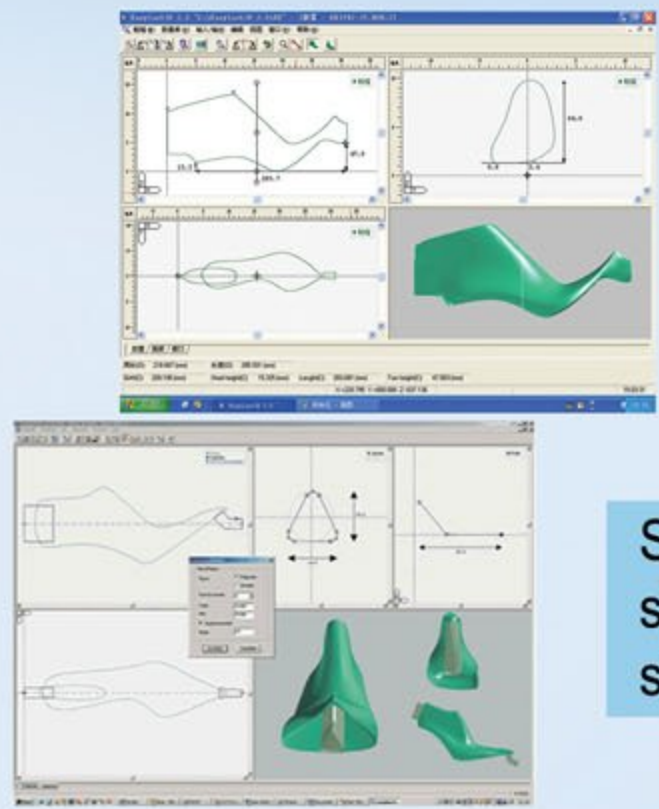
Quickly scans a shoe last in 4 mins



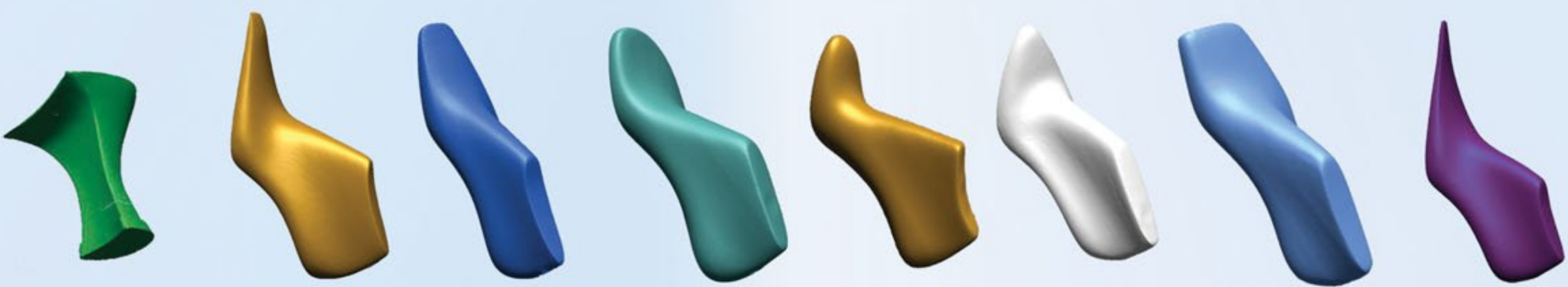
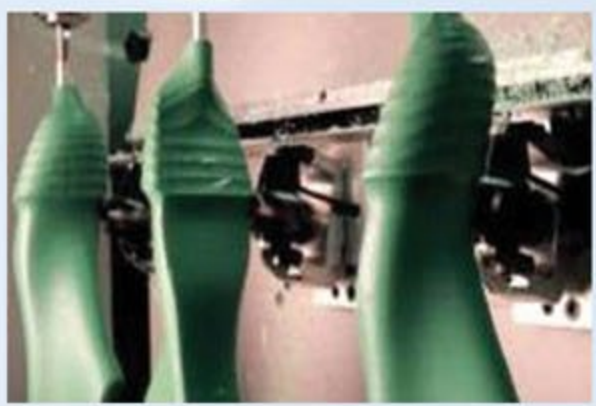
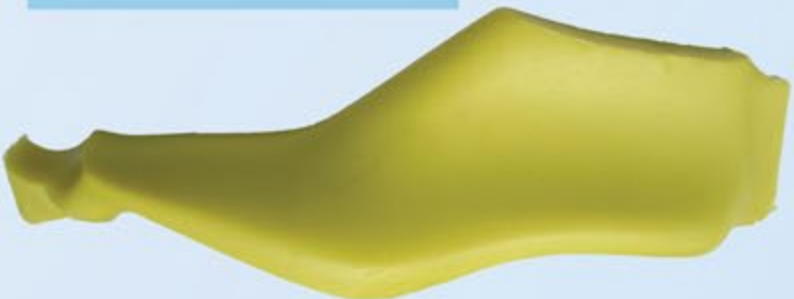
Can incorporate with NewLast and mainland shoe last production



Supports EasyLast size scaling and shoe last design



Finished Product

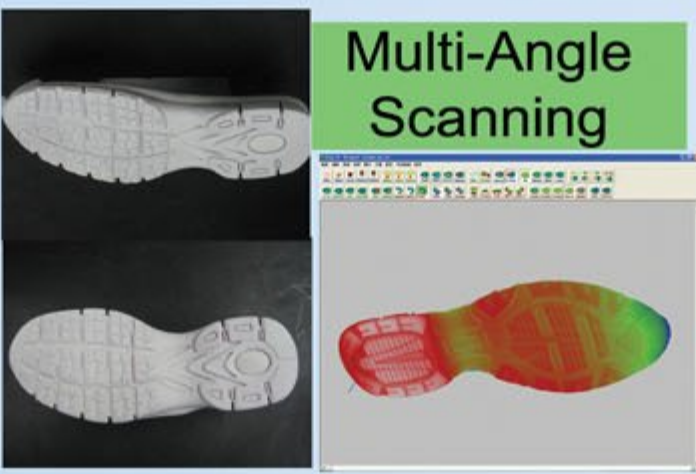


XYZ 3D Scanner

High Scanning Speed **8 mins**

Advantages

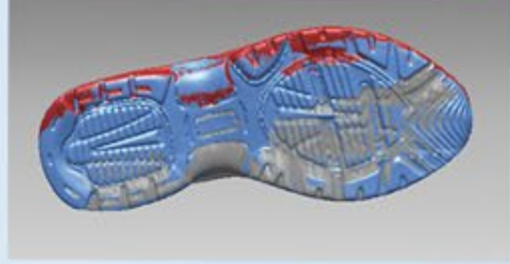
- Shortens product development period
- Enhances product design quality
- Direct CNC toothpath generation
- Scans last bottom for production and insole mold R&D
- Supports rapid corrections in CAD
- Saves tremendous time of drawing a design from scrap



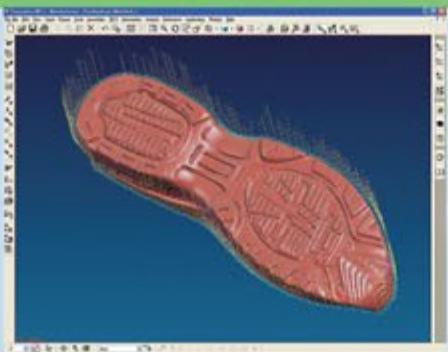
Multi-Angle Scanning



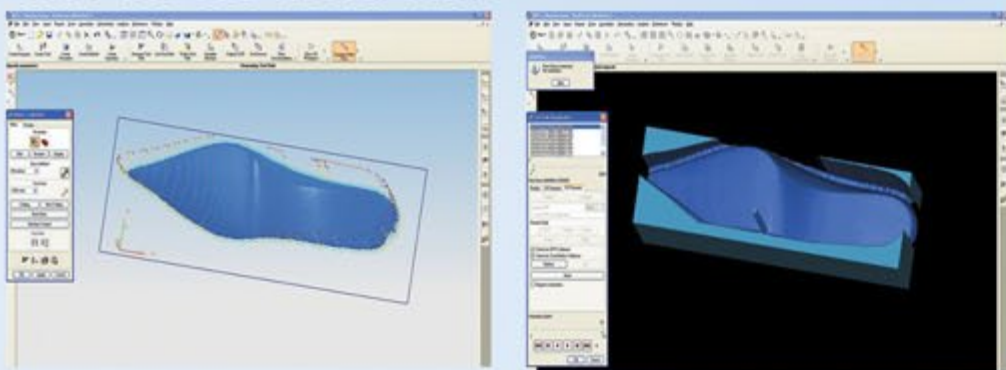
Auto Alignment and Data Combining



Direct CNC Toothpath Generation



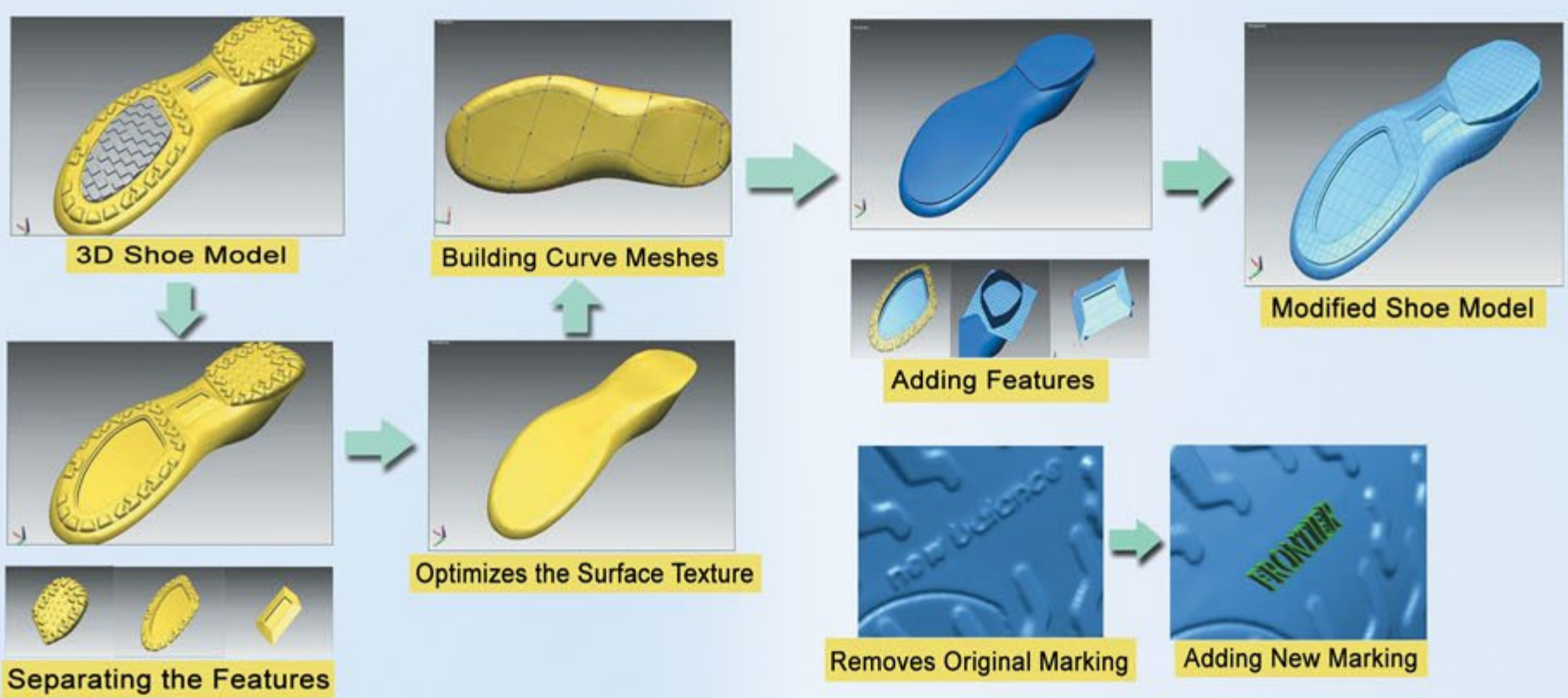
Scans last bottom for direct production and insole mold R&D



Scans insole/shoe pads and accessories for R&D

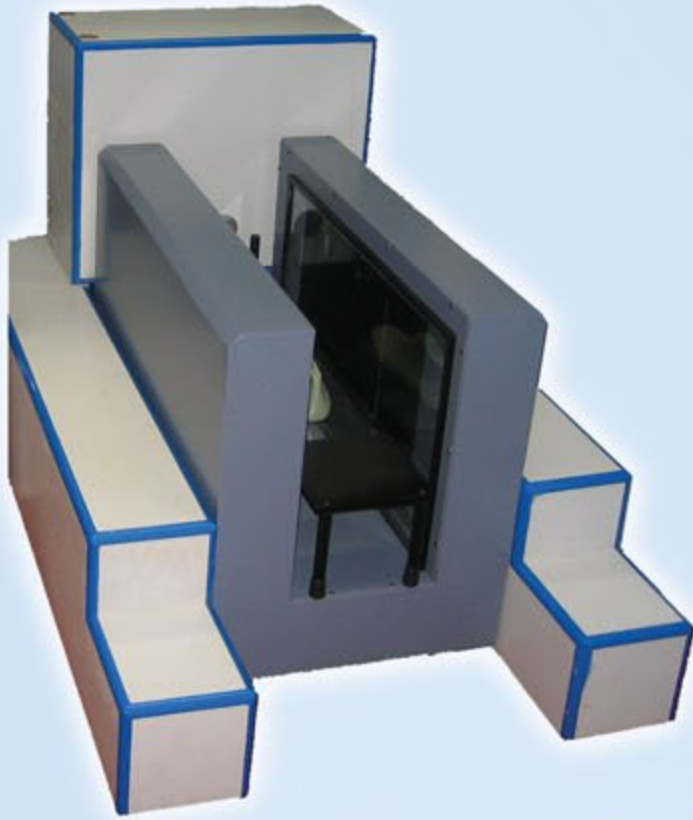


Examples of shoe sole R&D



3D Foot Scanner

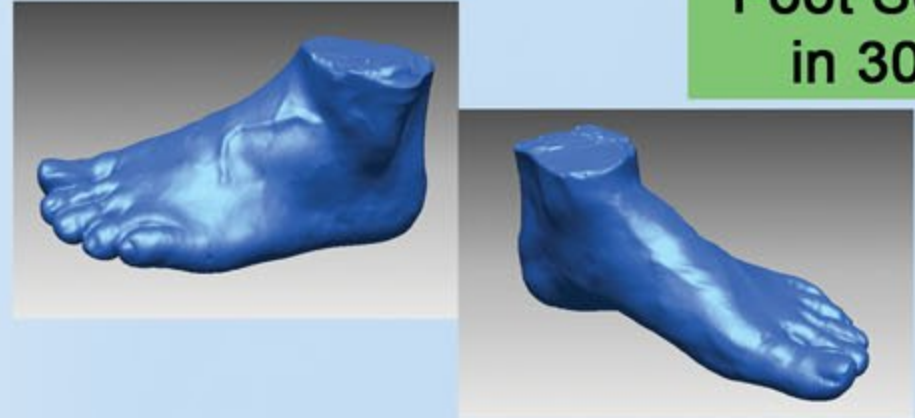
Scans the geometric shape of customers' feet for custom made foot wear



Advantages

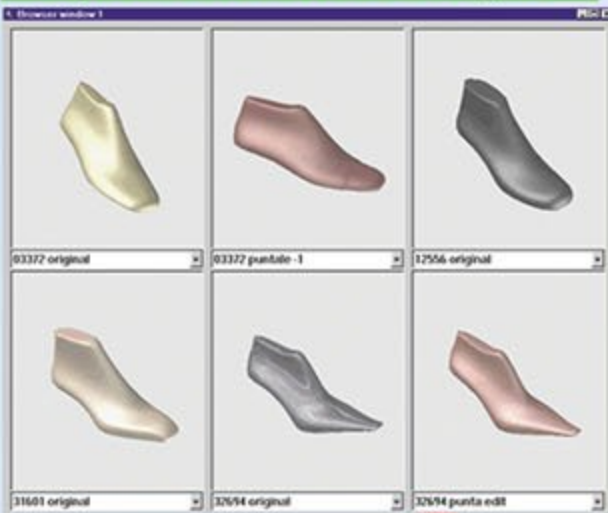
- 30 secs high speed foot scanning
- Auto comparison with 40 standard samples
- Builds large foot data base for R&D
- Creates large foot data base to improve shoe designs
- Facilitates shoe last modifying process
- Supports size scaling softwares and produce shoe last based on scanned foot data
- Supports EasyLast in designing shoe last

Foot Scanning in 30 secs

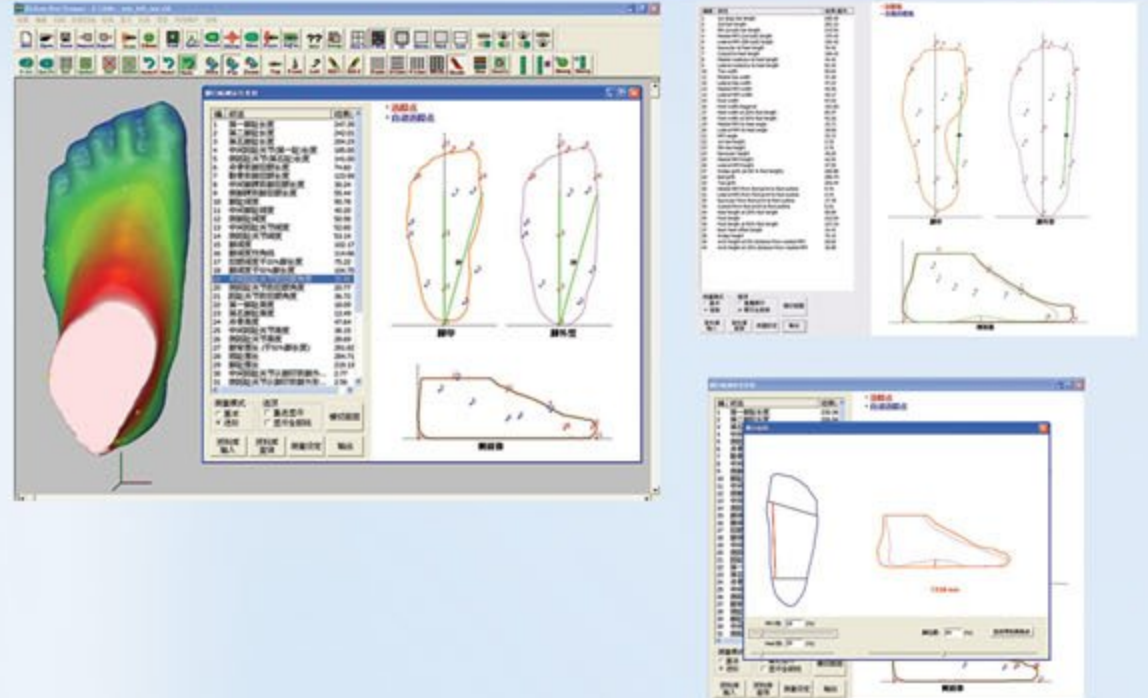


- Supports large scale 3D data collection and analysis of foot geometry
- Improves shoe designs and comfort level
- Allows for custom made shoes to maximize comfort

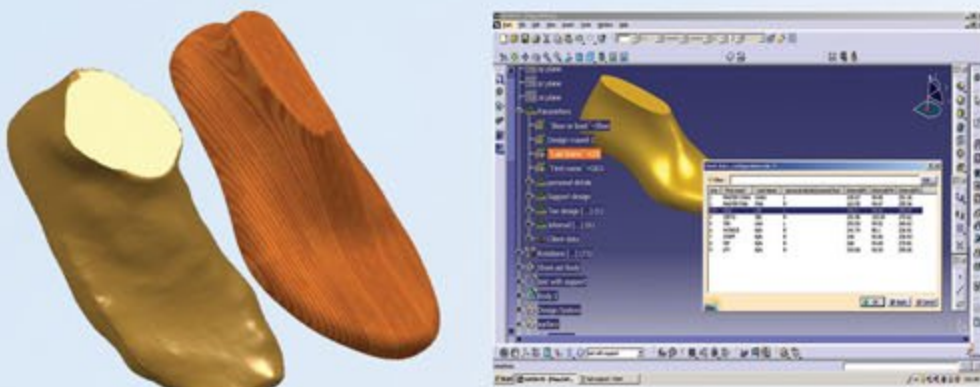
Optional Last Style



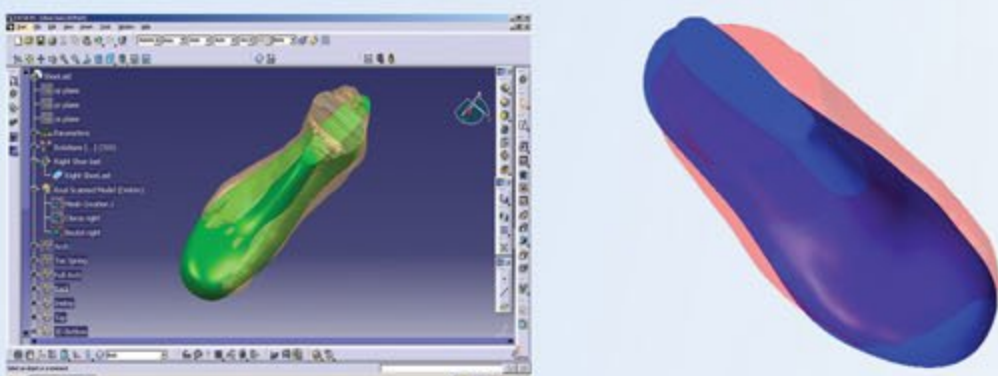
Auto comparison with 40 standard samples



Supports Size Scaling Softwares



Custom Production of Shoe Lasts

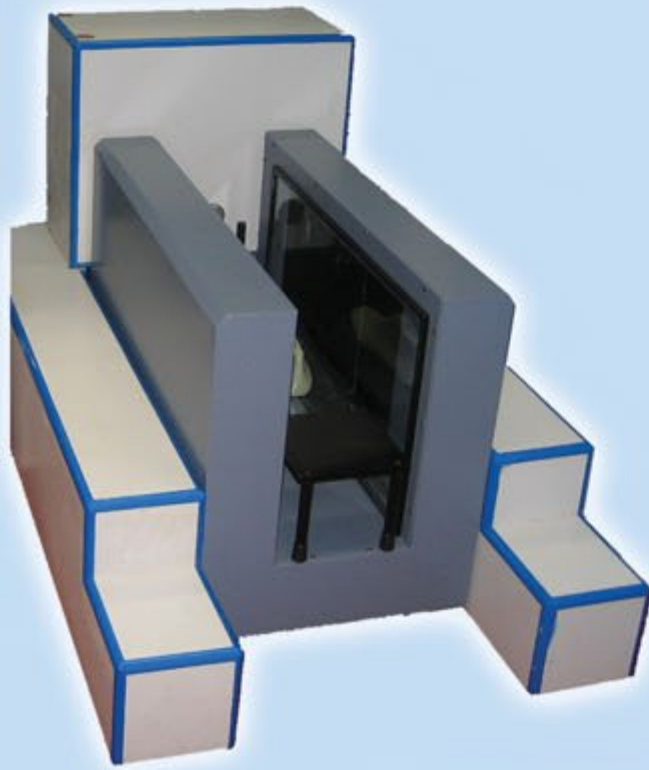


3D Laser Scanning System - Scan 3D II

Patented Design
 Patent No. : 200520054113.6
 200520054112.1

Leading Edge German Technology

Scan 3D II is an integrated laser scanning system that utilizes the latest advanced German optical measurement and numerically controlled positioning technology and components. Scan 3D II can capture the geometric shape of a shoe last within 4 minutes, and promptly deliver the 3D data for computer display.



3D Foot Laser Scanner

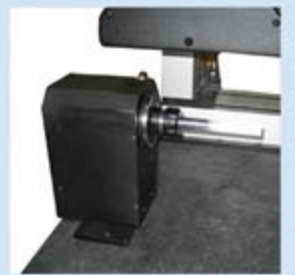


Scan 3D II - Rotary



Scan 3D II - High Speed+

Accessories



4 axis auto scanning



Scanner Head for CNC-Milling



Scanner Cart

Scan 3D Specifications					
Model	3D Foot Laser Scanner	Scan3D II - Rotary	Scan 3D II - Precision	Scan 3D II - High Speed	Scan 3D II - High Speed+
Dimension	34(L) x 20(W) x 24(H) inch	40(L) x 43(W) x 59(H) inch	40(L) x 43(W) x 59(H) inch (several size available)		
Scan Volume	380 x 150 x 150 mm ³	Diameter 220 x 400mm ³	S: 360 x 300+Laser Length x 400mm ³ / M: 460 x 400+Laser Length x 400mm ³ / L: 600 x 400+Laser Length x 530mm ³		
Laser Type	Class II laser, 670nm, visible red spectrum				
Linear Repeatability	+/- 0.01mm	+/- 0.01mm / 0.01 Deg	+/- 0.01 mm		
Linear Accuracy	+/- 0.01mm	+/- 0.01mm / 0.02 Deg	+/- 0.01 mm		
Optical Resolution	+/- 0.35 mm (W&H)	+/- 0.10mm (Z) +/- 0.20mm(Rad)	+/- 0.03mm (Y) +/- 0.05mm (Z)	+/- 0.05mm (Y) +/- 0.10mm (Z)	+/- 0.08mm (Y) +/- 0.15mm (Z)
Standard Deviation	<0.35 mm	<0.10 mm	<0.03 mm	<0.05 mm	<0.08 mm
Stand-off Distance	~150mm				
Laser Length	-	85 mm	36 mm	56 mm	70 mm
Scan Speed	20,000 pts / sec	48,000 pts / sec			
Scan Software	Scan 3D				
Output Format	IGES, DXF, ASCII Point Cloud Format, OBJ, STL Triangle Surface Format				
Operating Voltage	220AC, 50Hz				



 **Frontier Advanced Technology Ltd.**
 創機科技有限公司

Mong Kok Office: Flat 2, 10/F, Fuk Hong Industrial Building,
 60-62B Tong Mi Road, Mongkok, Kowloon, Hong Kong
 Kowloon Tong Office: Unit 118, 1/F, Inno-Centre, 72 Tat Chee Avenue,
 Kowloon Tong, Kowloon, Hong Kong
 Dongguan Office: Jinsha Admin. District, Chang An Town, Dongguan, China
 H.K Tel: (852) 3188 2335 H.K Fax: (852) 3188 4883
 China Tel: (86) 769 - 21860299 China Fax: (86) 769 - 81604535
 Web: www.frontiertech.com.hk Email: info@frontiertech.com.hk

Remark: Product specifications, pictures and materials are only for reference, we reserve the right to make changes without notice.

Authorized Dealer