



High Quality Computerized Plastic Shot Production

Advantages :

- Simultaneous 3D and texture scanning, computerizing the 3D manual drawing lines
- Capable of making fully identical left & right-sided plastic shot
- Unify the inspection standard, reduce argument
- High accuracy and repeatability to ensure plastic shot dimensions
- Not rely on human skills and guarantee consistent high product quality
- Enhance customer confidence and improve company image

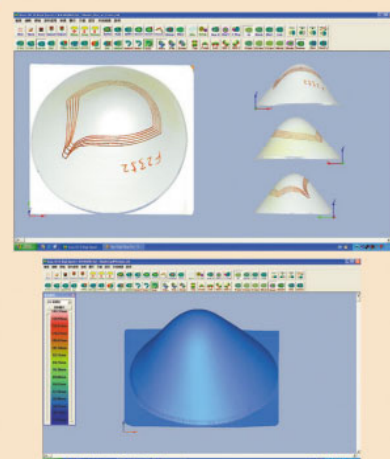
40X High Speed Scan
Simultaneous 3D Shape
& Texture Scanning



Manual grading and drawing on master cone



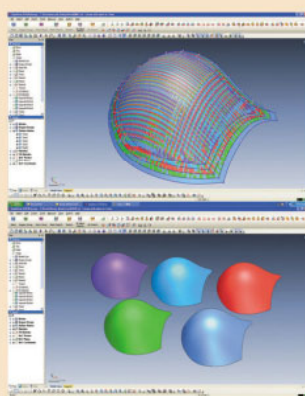
3D and texture high speed scanning for master cone



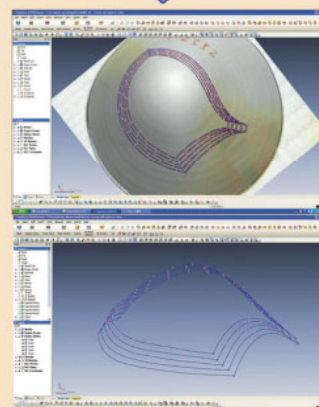
The result of 3D shape and texture mapping



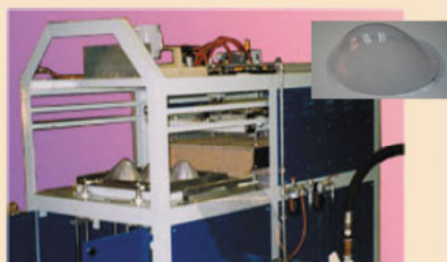
Produce master cone mould by CNC



Produce different sizes 3D models



Direct extract the 3D grading curves from the texture data



Vacuum forming to produce plastic shot



CNC milling to cut plastic shot with master cone mould as support fixture



L & R identical plastic shot

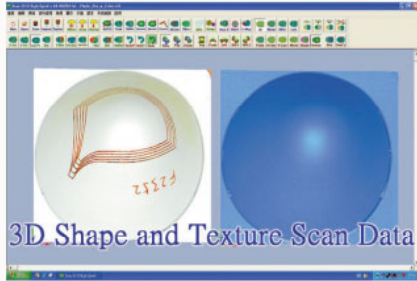
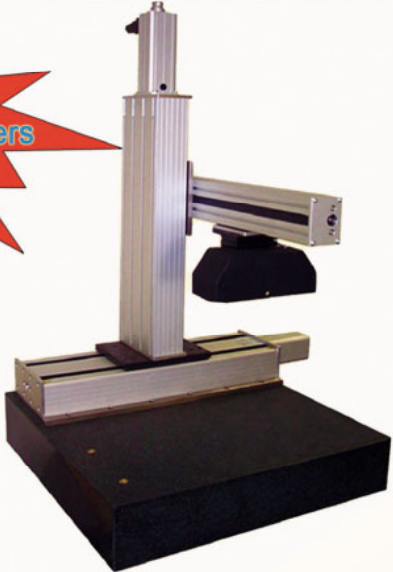
3D Scanner

German Advanced Technology

Patented Design
Patent No.: 200520054112.1
200520054113.6

Simultaneous 3D and Texture Scanning

40X Faster Than Traditional Laser Scanners

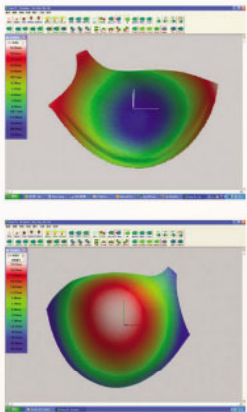


3D Shape and Texture Scan Data

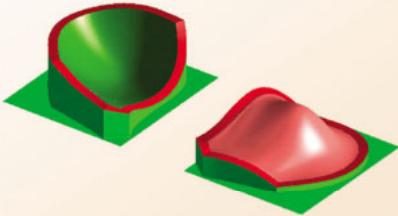


Advantages

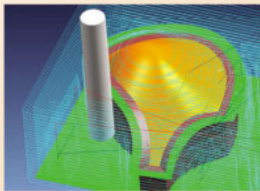
- Capable of making fully identical left & right-sided bra cup
- High accuracy and repeatability to ensure mould dimensions
- Not rely on human skills and guarantee consistent high product quality
- Enhance customer confidence and improve company image
- Becoming a must in getting Europe and US orders



Bra Cup Scanning



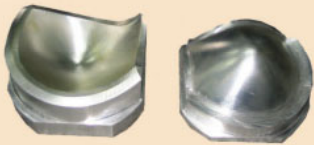
CAD Mould Design



Generating Toothpath



CNC Milling



Manufactured Aluminium Mould



Product

Work Flow of 3D Computerized Mould Manufacturing

High Speed and Low Cost Plastic Shot Production



Use Plastic Injection Machine to produce raw material



Tailor-Made raw material for fast cutting and cheap price



CNC-milled mould



Cost Saving Approach in Bra Industry

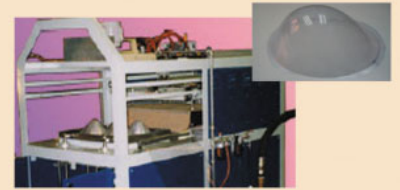
- Using tailor-made raw material to save cost and speed up milling speed
- Very high cutting speed due to soft material (HDPE)
- No roughing required, only semi-finishing and finishing milling
- Can produce identical L&R halves plastic shot with cheap price
- High repeatability; enhance customer confidence



L&R identical halves plastic shot



Use CNC to cut plastic shot



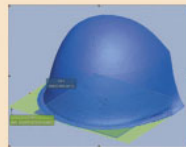
Vacuum forming to produce plastic shot

Application: Bra Volume Measurement

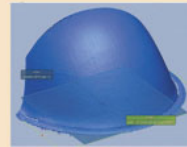


Accuracy: 0.1mm
Scan time: 12min

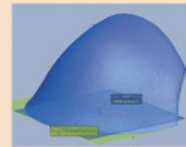
Can measure the enclosed volume by software, evaluate the distortion



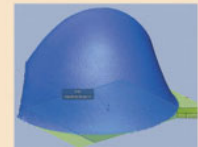
Left (outer side)



Right (outer side)



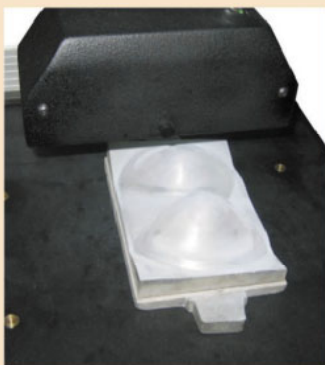
Left (inner side)



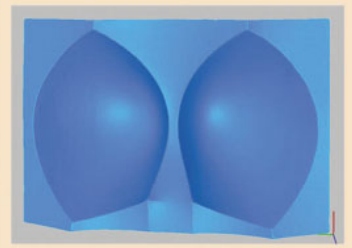
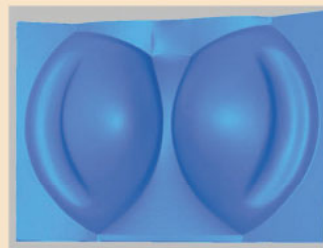
Right (inner side)

Enclosed volume between bra surface and the bottom plane; The volume of material (cm ³)					
Left (outer)	Left (inner)	Left (material)	Right (outer)	Right (inner)	Right (material)
346	259	87	325	246	79

Application: Digitized Mould, Reduce Mould Stock



By using 40X high speed scanning, computerize all the aluminium mould to form a mould library. Re-use all the aluminium which can save up to hundreds thousand dollars



Computerized Mould Data

Direct Mould Production from Computerized Data when necessary

Bra Thickness Measuring Machine

Patented Design
 Patent No.: 200520054112.1
 200520054113.6

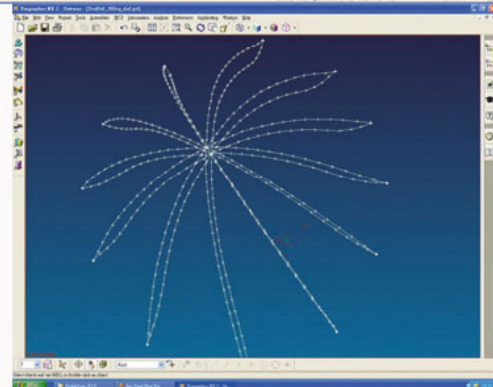
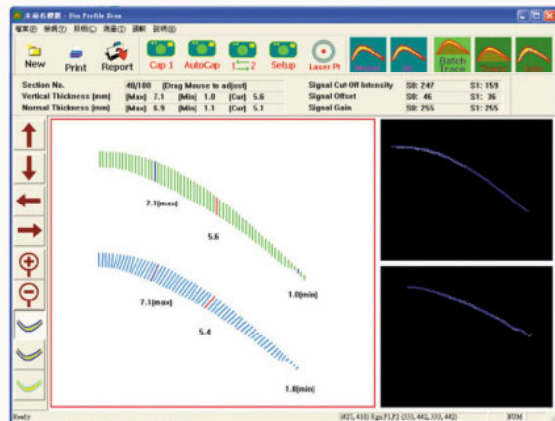
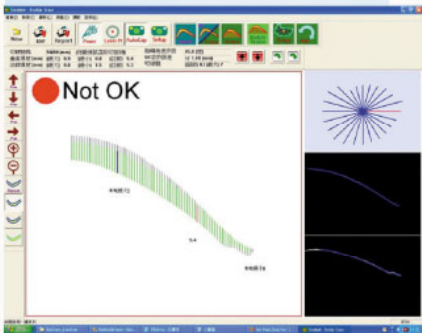


3-in-1 Functions

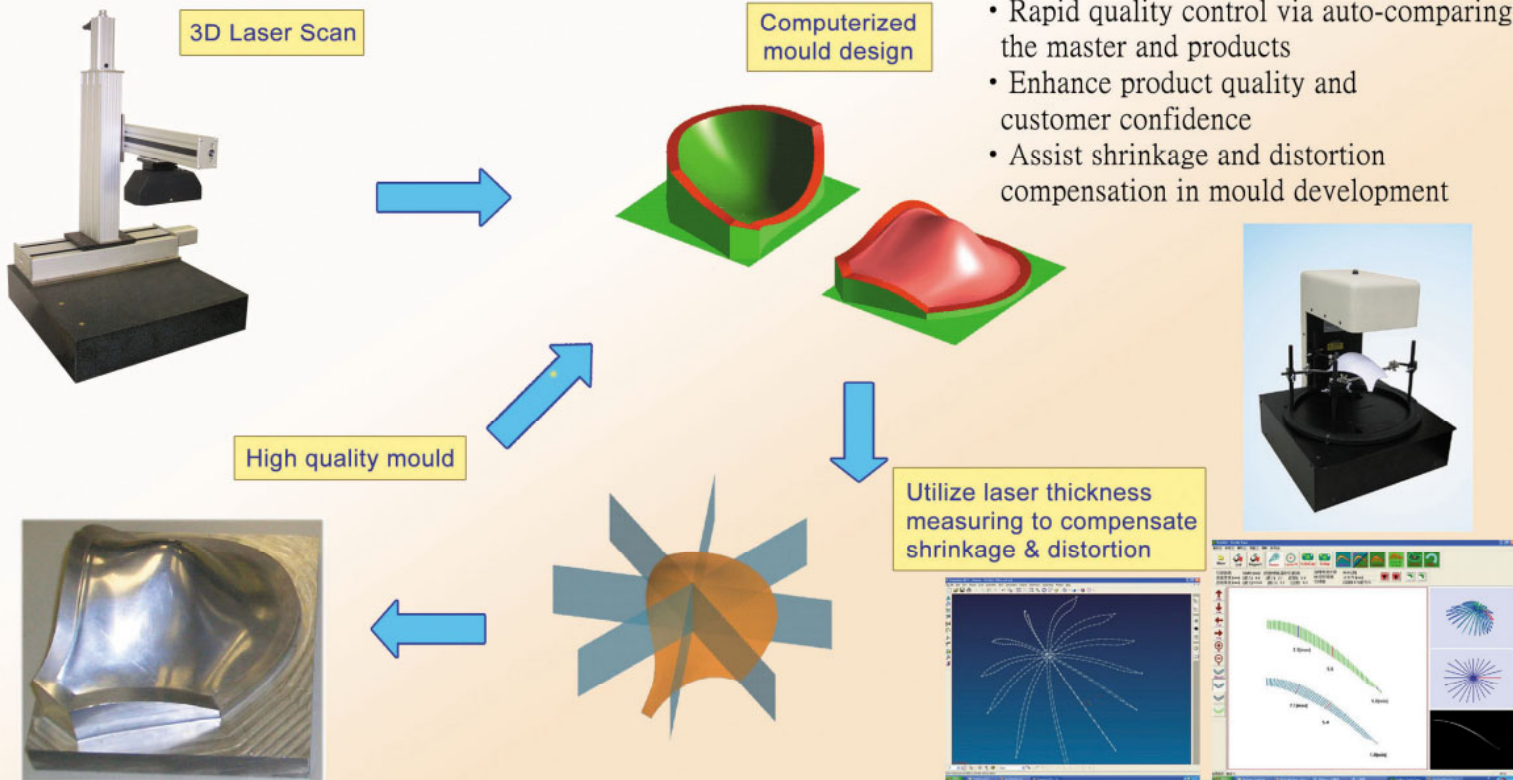
- Surface Thickness Measuring
- Surface Curvature Measuring
- 3D Shape Digitizing

Product Features:

- High speed measurement (about 1 sec/measurement)
- Capable of connecting with notebooks and computers
- Non-contact and non-destructive measurement
- Assist shrinkage and distortion control
- Capable of generating QC report
- Support statistical analysis and control usage
- Export to other software (e.g. Microsoft Excel,UG)



Assist Shrinkage and Distortion Control



Advantages:

- High speed measuring of surface thickness and curvature (1 sec/measurement)
- Rapid quality control via auto-comparing the master and products
- Enhance product quality and customer confidence
- Assist shrinkage and distortion compensation in mould development



Frontier Advanced Technology Ltd.

創機科技有限公司

Mong Kok Office: Flat 2, 10/F, Fuk Hong Industrial Building, 60-62B Tong Mi Road, Mongkok, Kowloon, Hong Kong
Kowloon Tong Office: Unit 118, 1/F, Inno-Centre, 72 Tat Chee Avenue, Kowloon Tong, Kowloon, Hong Kong
Dongguan Office: Jinsha Admin. District, Chang An Town, Dongguan, China
 H.K Tel: (852) 3188 2335 H.K Fax: (852) 3188 4883
 China Tel: (86) 769 - 21860299 China Fax: (86) 769 - 85448821
 Web: www.frontiertech.com.hk Email: info@frontiertech.com.hk

* Product specifications are subject to change without notice

Authorized Dealer